

Dispose of used syringes immediately

Ask your local waste management for advice about disposing of syringe.

Did the injection give you bruises or other symptoms?

You may get a small bruise in the injection site which is harmless. If the bruise gets bigger or the skin of injection site swells contact your doctor and mention all of the symptoms you have noticed. An ice pack may reduce reactions and pain in the injection site.

Sometimes you may feel a stinging sensation when you inject yourself, particularly if the needle tip lets out medicine before the injection. Do not press the plunger on the syringe before the injection.

Questions and advice

Contact your doctor if you have any questions, you feel unsure about anything, or you would like more information about KLEXANE®. Further information about the product and injecting the medicine is also available via Sanofi's [free Clotline](#), [Tel: +358 800 138 138](#) Calls to the Clotline are free in Finland. The service is available on weekdays from 8 a.m. to 5 p.m.

Treating ward: _____

Telephone number of the ward: _____

Nurse: _____

KLEXANE® FOR PREVENTING CLOTS

Sanofi's free Clotline

+358 800 138 138

The service is available on weekdays
from 8 a.m. to 5 p.m.

The Clotline can provide help with using our
KLEXANE® medicine and guidance on how to
inject yourself correctly.



KLEXANE® INSTRUCTIONS FOR HOME USE

INFORMATION FOR THE USER

Instructions for using medicine after leaving hospital



Sanofi Oy

Tel: +358 201 200 300
www.sanofi.fi

SAFI.ENO.17.02.0089

YOUR DOCTOR WILL EVALUATE YOUR RISK OF GETTING A BLOOD CLOT

Many illnesses that require hospital treatment increase the risk of blood clots to such an extent that **medical treatment is needed to prevent them.**

What is a blood clot?

Blood clots (venous thrombus) usually block a vein in the leg. Pieces may break off the clot and continue to be circulated in the blood, causing a blockage in the pulmonary artery.

Blood clots can be life-threatening without significant symptoms before a serious incident occurs.

Factors that increase the risk of a blood clot

The risk of blood clots is increased by the following:

- Surgical operations and related bed rest
- History of venous thrombosis
- Significant bruising, multiple injuries, hip fractures, spine injuries
- Intensive care
- Acute illness requiring bed rest
- Pregnancy, caesarean section
- Contraceptive pills, hormone replacement therapy
- Infection, particularly inflammatory bowel disease, certain rheumatic disorders
- Lung or heart disease
- Excess weight
- Smoking

Continue the KLEXANE® treatment prescribed by your doctor at home

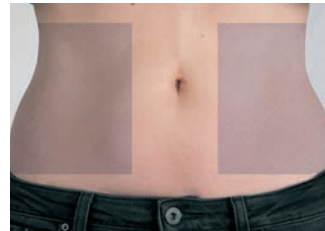
Your doctor has prescribed you a medicine named KLEXANE® to prevent blood clots. The dose and duration of your KLEXANE® treatment has been precisely calculated based on your personal health. The purpose of the medicine is to prevent blood clots and pulmonary embolisms from forming.

For successful treatment, it is important that you continue taking your medication as long as your doctor has prescribed after leaving the hospital.

Current Care Guidelines for arterial thrombosis and pulmonary embolism, 4 March 2016.

HOW TO GIVE YOURSELF AN INJECTION OF KLEXANE®

Your doctor or nurse will show you how to give yourself



1. Wash your hands carefully and prepare the injection site.

We recommend that you inject into fatty tissue of the lower abdomen at least 5 cm away from your belly button. Clean (do not rub) the injection site with an antiseptic wipe.

Note: Use a different injection site each time as it is recommended to change the injection site.



2. Prepare the syringe.

Check the expiry date on the medicine. Check that the syringe is not damaged and that the solution is clear without particles. Do not use the syringe if it has been damaged or expired. Pull off the needle cap.



3. The pre-filled syringe is ready to be used. Do not remove the air bubble before you inject.

If a droplet appears at the needle tip point the syringe downwards and tap the syringe to remove the droplet.



4. Sit or lie in a comfortable position.

Grasp a skin fold between your fingers in order to avoid injection into muscle.

an injection. Read the instructions carefully and injections will become a routine after the first few times. The pre-filled syringe includes an automatic safety system to avoid accidental needle pricks after it has been used.



5. Hold the needle at right angle to the skin fold and inject.

Hold the skin fold throughout the injection and empty the syringe completely.



6. Remove the syringe from the injection site keeping your finger on the plunger.

Note: Check on the carton that you have received a syringe with a safety system which should be activated after the injection as described below.



7. Point the needle away from yourself and other people.

Activate the safety system by pressing hard on the plunger. A protective sleeve will cover the needle automatically and you will hear a click to confirm that the safety system has been activated.

Note: The safety system will not be activated if the syringe contains any medicine.

60 mg, 80 mg and 100 mg syringes: Your doctor may have advised you to take a smaller dose. In this case, remove the excess as follows: hold the syringe pointing downwards (to keep the air bubble in the syringe) and expel the excess medicine into a suitable container.

If you have any questions about using or injecting the medicine ask the medical staff for guidance.